

ELASTIMOLD[®] STYLE 91GD CONNECTOR KIT

INSTALLATION INSTRUCTIONS

This kit provides a positive ground connection to existing rubber encapsulated airfield series lighting circuit isolating transformer secondary.

This package contains one each of: 91GD moulded body, hose clamp, ground stud assembly, lubricating compound, wiper and instruction sheet.

Installation:

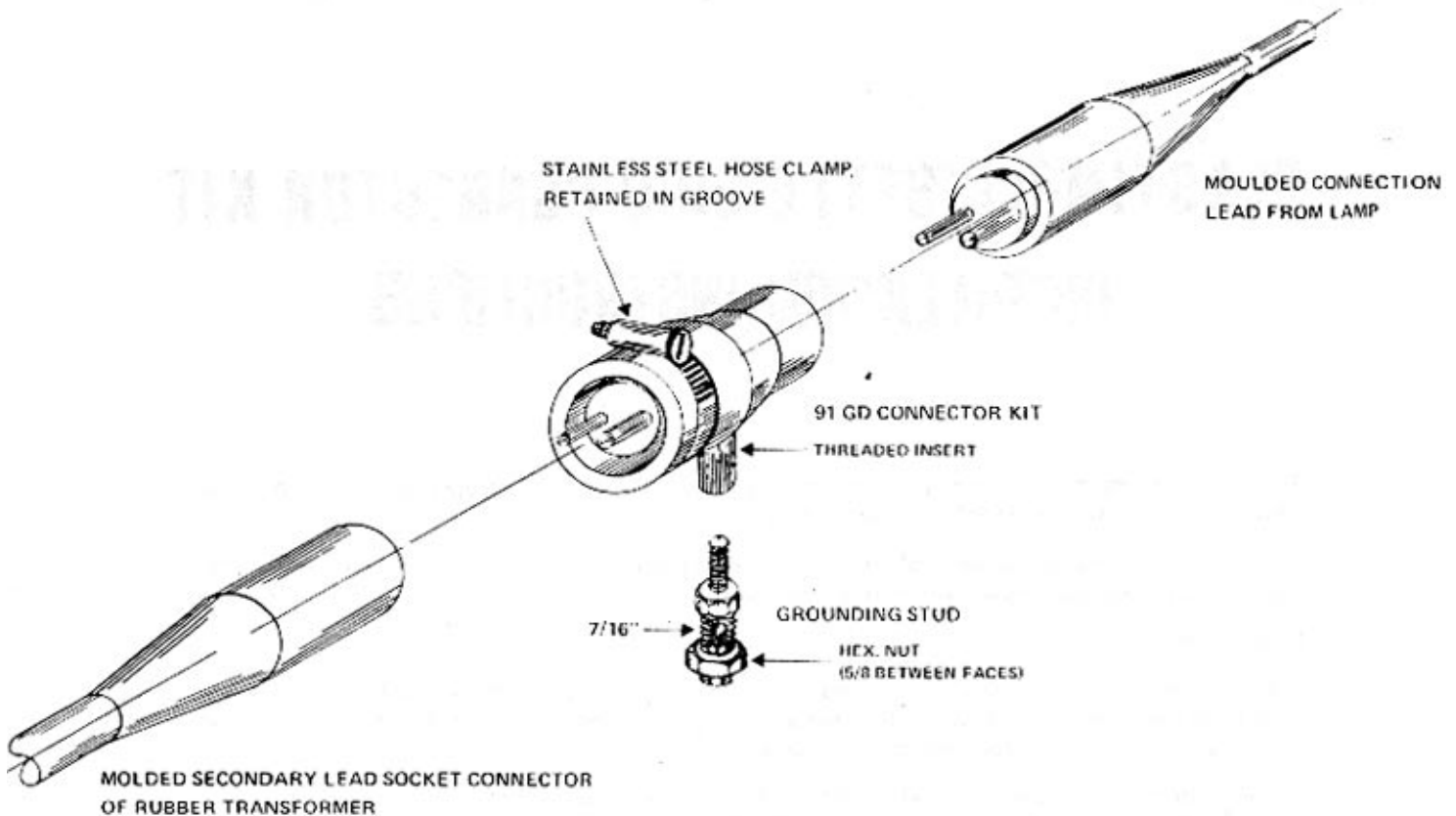
1. Clean (before separating) the moulded plug and receptacle body of transformer secondary and lighting fixture lead with wiper moistened with chlorothene or isoproponal and allow to dry. Remove tape from the mating surface.
2. Lubricate both plug and socket of 91GD kit body with lubricant provided and place the hose clamp in the groove on the pin side of 91GD.
3. Separate moulded cable connectors and lubricate both plug and receptacle.
4. Insert transformer secondary lead socket connector into 91GD pin.
5. Insert fixture lead pin body into 91GD socket.
6. Tighten the hose clamp snugly with a screwdriver.
Caution: Over tightening will deform the moulded assembly.

7. Grounding:

Assemble the grounding stud securely by hand into the threaded insert of 91GD. A short 7/16" open ended wrench may be used if required. The maximum tightening torque not to exceed 4 ft. - lb.

Note: Excessive torque will shear off the stud head. Clean and straighten the portion of the ground counterpoise wire to be connected to the transformer.

Remove hex nut from the stud, place ground counterpoise wire in the stud groove, replace and tighten nut by a short 5/8" open ended wrench while holding the bottom stud with a 7/16" wrench. The maximum tightening torque is not to exceed 8 ft. - lb. **BE SURE TO HOLD THE BOTTOM STUD WITH A WRENCH WHILE TIGHTENING.**



WARRANTY

This product will perform within the recommended operational ratings when installed and operated in accordance with applicable instructions. Amerace Corporation's liability is limited to replacement of component parts designed and manufactured by Amerace which are proved to be defective in workmanship or material. All statements, technical information and recommendations supplied with the product are based on tests believed to be reliable, but the accuracy or completeness thereof is not guaranteed. In adjustment of any claims, inspection of the parts and application will be required. AMERACE expressly disclaims and excludes all other warranties express or implied, including without limitation the warranties of merchantability and or fitness for a particular purpose, and also disclaims and excludes all consequential and incidental damages. This warranty is effective for two (2) years from date of shipment. (W-EE2) 2540-67(c)



AMERACE LTD.

A subsidiary of Amerace Corporation
77 West Beaver Creek Road,
Richmond Hill, Ontario, Canada L4B 3A7